

Smet[®]
SINCE 1963

PARTNER PER L'ITALIA

Raimondi
Cocoa Chocolate Advisory since 1954



RAIMONDI SRL
VIA DEL COMMERCIO 27A
16167 GENOVA - ITALY

WWW.RAIMONDICOCOA.IT
INFO@RAIMONDICOCOA.IT

CHOCOLATE DECORATIONS
SMET CHOCOLATERIE



SMET WORLDWIDE

From our facilities in Belgium, the Netherlands, Germany, Poland, Canada, and Indonesia we supply our customers worldwide. This allows us to be customer-oriented, reliable and ensure fast deliveries. Our organisation is focused on our customers' satisfaction and wishes.



produced on production sites who have the following certificates



Smet is a family owned **Belgian company** with a very comprehensive offering. We are a high-quality **chocolate products and sweets**, we manufacture semi-finished products such as inclusions and toppings, but also consumer products and transfer sheets.

For over **50 years**, Smet has been known as a decoration supplier and problem solver for the industry. We strive to supply the best finished products that meet the **highest quality** requirements to satisfy our customers!

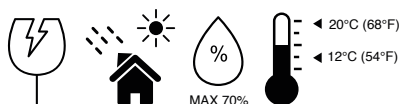
Since 2019, **Cargill's** cocoa and chocolate business has acquired Smet. With this exciting development, we now bring together great people with a deep passion and commitment to producing excellent chocolate.

Smet è un'azienda familiare **belga** con un ampio assortimento. Realizziamo **prodotti di cioccolato** di alta qualità nonché semilavorati come inclusioni e toppings ma anche transfer sheets e prodotti per private label.

Da oltre **50 anni** Smet è riconosciuta a livello internazionale come fornitore di decorazioni di cioccolato e prodotti personalizzati per l'industria. Ci impegniamo a fornire un prodotto professionale di **ottima qualità** per soddisfare le esigenze dei nostri clienti.

Dal 2019 la divisione di **Cargill's** Cocoa and Chocolate ha acquisito Smet. Grazie a questa importante sinergia, abbiamo unito persone esperte e con una profonda passione per produrre cioccolato eccellente.

STORAGE CONDITIONS



LEGEND

H Halal
K Kosher

P. 04 **PENCILS & STIXX**
 P. 05 **CUPS & SHELLS**
 P. 06 **DECORATIONS**
 P. 10 **LUX PEARLS**
 P. 13 **CURLS**

SMET HAS TAKEN ALL REASONABLE CARE TO ENSURE THAT THE INFORMATION CONTAINED IN THIS CATALOG IS CORRECT, BUT DOES NOT ACCEPT LIABILITY FOR ANY MISPRINTS. PRODUCT COLOURS MAY DIFFER SLIGHTLY FROM PHOTOS DUE TO DIFFERENT PRINT- OR COLOURSETTINGS.

PENCILS & STIXX



ZEBRA FOUR CHOCO STIXX



2104

DARK/WHITE

PICASSO PENCIL



2060

WHITE/DARK

DARK CHOCO STIXX



2201
2202
2204

DARK
MILK
WHITE

DUO CHOCO STIXX



2203

MILK/WHITE

REMBRANDT PENCIL



2070

DARK/WHITE

RUBENS PENCIL



2013
2014

20 CM
10 CM

VAN GOGH PENCIL

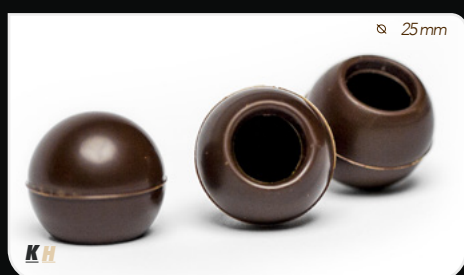


2080

20 CM WHITE/DARK

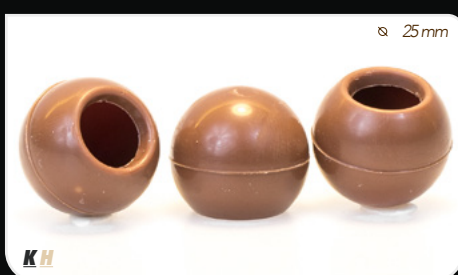


DARK TRUFFLE SHELLS



7133 DARK

MILK TRUFFLE SHELLS



7134 MILK

WHITE TRUFFLE SHELLS



7135 WHITE

SNOBINETTE MINI DARK CUPS



6112 DARK

PETIT FOURS ASSORTED CUPS



6141 DARK

COFFEE CUPS



6170 DARK

SNOBINETTE DARK CUPS



6110 DARK

VICTORIA CUPS



6160 DARK

CHOCOLATE DECORATIONS



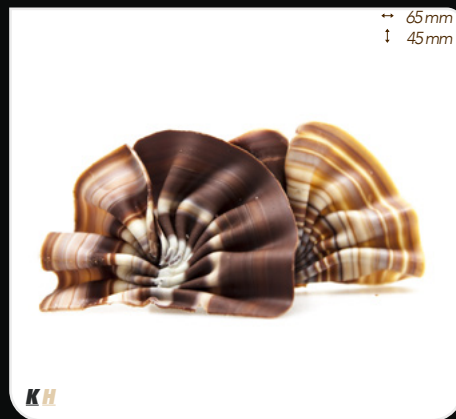
FORÊT DARK



8300

DARK

FORÊT MARBLED



8301

MARBLED

ACTUAL MARBLED PATTERN MAY VARY

FORÊT STRIPED



8302

DARK/WHITE

FORÊT MINI DARK



8303

DARK

FORÊT MINI MARBLED



8304

MARBLED

ACTUAL MARBLED PATTERN MAY VARY

FORÊT MINI WHITE DARK



8305

WHITE/DARK



SMALL MOCHA BEANS



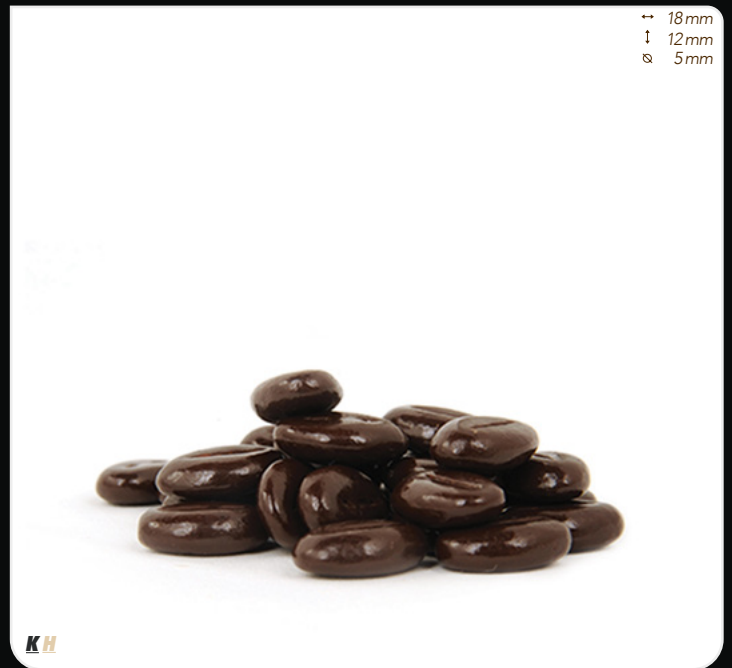
↔ 14mm
↓ 10mm
⊗ 4,5mm

KH

7903

DARK

LARGE MOCHA BEANS



↔ 18mm
↓ 12mm
⊗ 5mm

KH

7901

DARK

MARbled LEAVES



↔ 50mm
↓ 24mm

KH

7140

MARbled

SWIRL WHITE SPRING



↔ ±15mm
↓ ±25mm

KH

1091

WHITE/DARK

SWIRL DARK SPRING



↔ ±15mm
↓ ±25mm

KH

1090

DARK/WHITE

CHOCOLATE DECORATIONS



LINEA POLLINO



7122

WHITE/DARK

LINEA CARRARA



7210

WHITE/DARK

PUNTA CARRARA



7211

WHITE/DARK

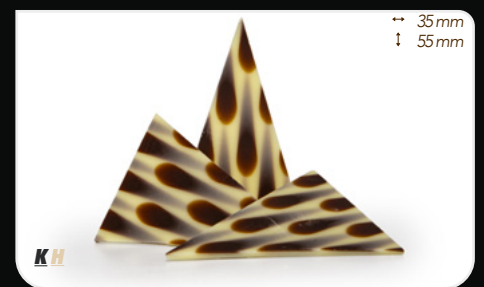
RAGGIA CARRARA



7213

WHITE/DARK

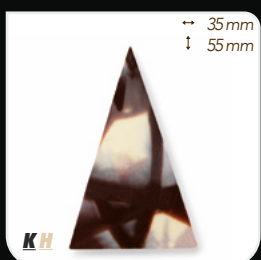
LACRIMA CARRARA



7212

WHITE/DARK

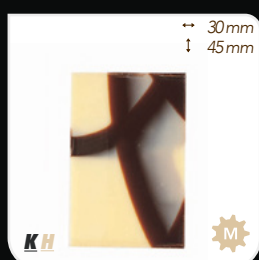
POINT JURA



7203

WHITE/DARK

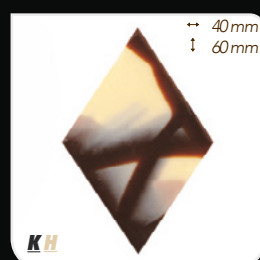
RECTANGULAR



7203

WHITE/DARK

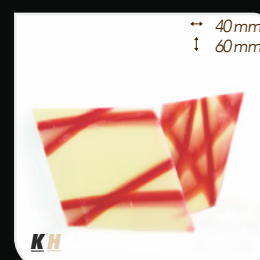
RHOMBUS JURA



7205

WHITE/DARK

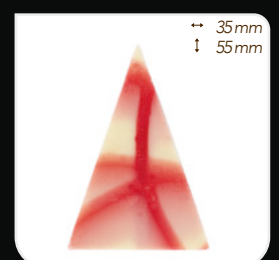
RHOMBUS JURA



7208

WHITE/RED

POINT RED JURA



7209

WHITE/RED



ORIENTAL



7115

DARK

FEATHERS



7103

DARK

SOIREE



7101

DARK

SPECIAL



7105

DARK

LUX PEARLS



MILK LUX PEARLS



8527 ±750 PCS/KG MILK

WHITE LUX PEARLS



8523 ±750 PCS/KG WHITE

MIXED LUX PEARLS



8528 ±750 PCS/KG D/M/W

BRONZE LUX PEARLS



8520 ±750 PCS/KG MILK

SILVER LUX PEARLS



8521 ±750 PCS/KG MILK

MILK GOLD LUX PEARLS



8522 ±750 PCS/KG MILK

PEARLWHITE LUX PEARLS



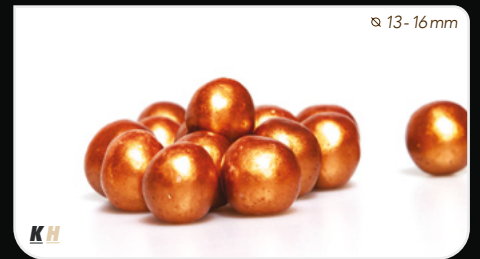
8524 ±750 PCS/KG WHITE

WHITE GOLD LUX PEARLS



8525 ±750 PCS/KG WHITE

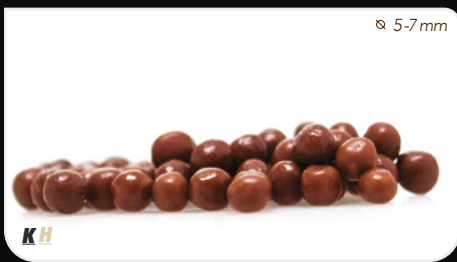
COPPER LUX PEARLS



8526 ±750 PCS/KG WHITE

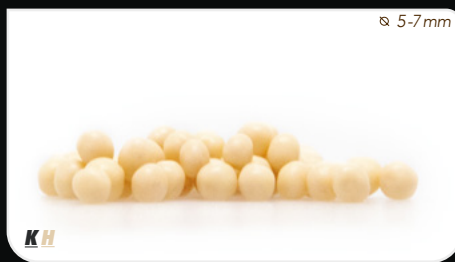


MILK MINI LUX PEARLS



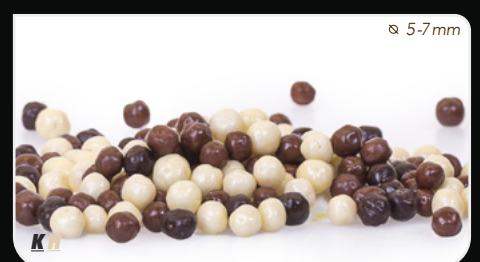
8507 ±19.000 PCS/KG MILK

WHITE MINI LUX PEARLS



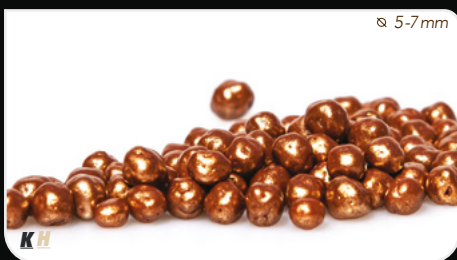
8503 ±19.000 PCS/KG WHITE

MIXED MINI LUX PEARLS



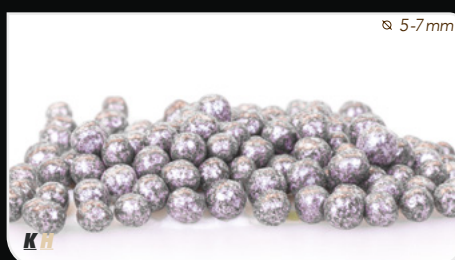
8508 ±19.000 PCS/KG D/M/W

BRONZE MINI LUX PEARLS



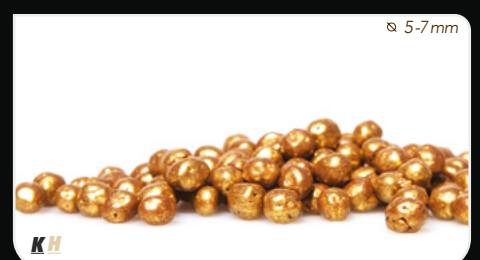
8500 ±19.000 PCS/KG MILK

SILVER MINI LUX PEARLS



8501 ±19.000 PCS/KG MILK

MILK GOLD MINI LUX PEARLS



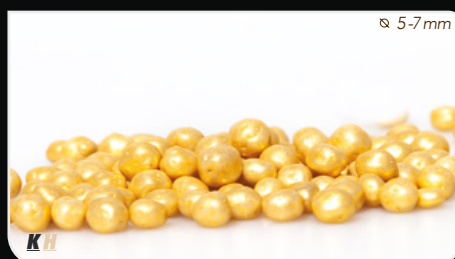
8502 ±19.000 PCS/KG MILK

PEARLWHITE MINI LUX PEARLS



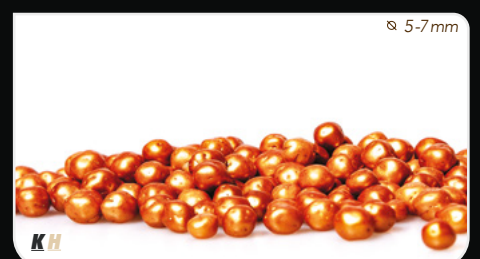
8504 ±19.000 PCS/KG WHITE

WHITE GOLD MINI LUX PEARLS



8505 ±19.000 PCS/KG WHITE

COPPER MINI LUX PEARLS



8506 ±19.000 PCS/KG WHITE

LUX PEARLS



STRAWBERRY LUX PEARLS



8530 ±750 PCS/KG

STRAWBERRY

YELLOW LUX PEARLS



8539 ±750 PCS/KG

LEMON

GREEN LUX PEARLS



8538 ±750 PCS/KG

GREEN

CARAMEL LUX PEARLS



8532 ±750 PCS/KG

CARAMEL



STRAWBERRY CURLS



9mm

1018

STRAWBERRY

CARAMEL CURLS



9mm

1019

CARAMEL

DUO CURLS



9mm

1017

DARK/WHITE

DARK CURLS



9mm

1020

DARK

MILK CURLS



9mm

1021

MILK

WHITE CURLS



9mm

1022

WHITE

DARK SHAVINGS



1060

DARK

MILK SHAVINGS



1061

MILK

WHITE SHAVINGS



1062

WHITE

SMET ETHICAL TRADE PROGRAM

CHILD LABOUR AND SLAVERY

We raise awareness of this issue with our suppliers to ensure that no child labour is used to make our products. Smet and its suppliers strongly condemn slavery, forced labour and any practices that exploit, endanger or harm children.



EMPLOYMENT IS CHOSEN

There is no forced, bonded or involuntary prison labour. Working hours comply with national laws and benchmark industry standards, whichever affords greater protection.



QUALITY CONTROL

Smet strives to obtain the highest quality standards. Therefore, it reviews the quality of all factors involved in the production of its products day by day.

DISCRIMINATION

Our program aims to ensure that all workers are treated equally, fairly and with the respect and dignity they deserve. Open communication is our key to achieve this standard.

WAGES

We assess all our final product suppliers to find out if all the workers in the supply chain earn at least a minimum wage and are paid for any overtime.

TRANSPARENCY

We report publicly, and in more detail as its experience grows, on our commitments, activities and impacts to ethical trading. We also encourage our suppliers to be transparent about their ethical trade performance.



SUSTAINABILITY

Smet contributes to a sustainable supply chain and carries responsibility towards society and the environment.

"As a Belgian chocolate company, fair trade and durability are high priorities for us. In order to help the smallest "cocoa farmers" in Ghana along, Smet has supported the construction of the preschool financially and has delivered didactic materials. By now, the preschool has been completed and it has recently got its own computer space which is a valuable addition for the school, as well as for the children of Ghana."

WORKING CONDITIONS

Smet ensures that everyone who makes its products is safe at work and has a healthy working environment. Workers shall receive regular and recorded health and safety trainings and such trainings shall be repeated for new or reassigned workers. Furthermore accommodation, where provided, shall be clean, safe and shall meet the needs of the workers.



TEAM SPIRIT

We believe in Synergy! Working together is more efficient, more productive and more fun for the team. The whole is much greater than the sum of the parts.



INNOVATION

As a problem solver, Smet is the reference for innovation in the chocolate decorations market. Our Research and Development team is working on a daily basis to continuously strengthen this position by optimising recipes and processes to deliver cutting-edge solutions.

A stylized, handwritten signature in black ink.

Johan Smet



Raimondi
Cocoa Chocolate Advisory since 1954

PARTNER PER L'ITALIA



WWW.SMET.BE
FB.COM/SMETCHOCOLATERIE
INSTAGR.AM/SMETCHOCOLATERIE

a **Cargill** company